

State of Utah



Photo Courtesy of Bill Rau

Community Wildfire Preparedness Plan

For the Wildland – Urban Interface

Grand County Service Area for Castle Valley Fire Protection (Castle Valley Fire District)

Castle Valley Fire District Wildfire Preparedness Plan 2019



Department of Natural Resources

Division of Forestry, Fire and State Lands


1594 W North Temple, PO Box 145703, Salt Lake City, UT 84114-5703

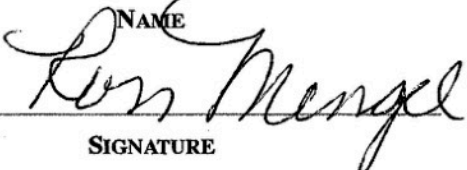
Page Intentionally Left Blank

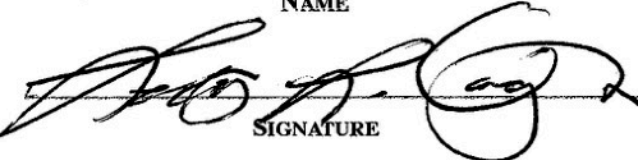
Castle Valley Fire District Wildfire Preparedness Plan 2019

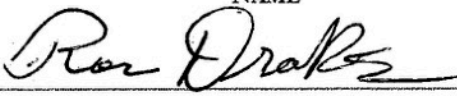
Declaration and Concurrence Page


This list needs to be customized to the individual plan. Provide the names and affiliations of all cooperators. This page will then be signed after all cooperators have reviewed the plan and concur with its contents.

Bob Lippman	Firefighter, Community Member/Homeowner
NAME	AFFILIATION
	7/2/19
SIGNATURE	DATE

Ron Mengel	Firefighter, Community Member/Homeowner
NAME	AFFILIATION
	7/9/19
SIGNATURE	DATE

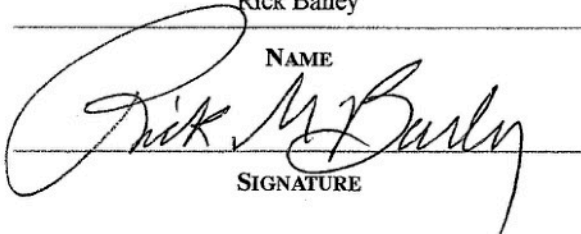
Leta Vaughn	Fire Commission, Firefighter, Community Member/ Homeowner
NAME	AFFILIATION
	7/2/19
SIGNATURE	DATE

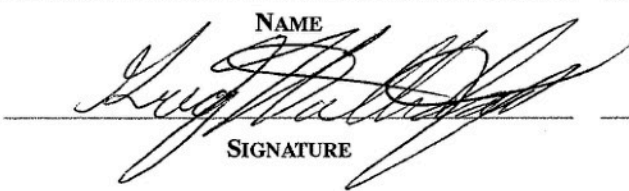
Ron Drake	Castle Valley Fire Chief, homeowner, media representative (Times Independent)
NAME	AFFILIATION
	JULY 2, 2019
SIGNATURE	DATE

Jazmine Duncan	Mayor of The Town of Castle Valley, Firefighter, Homeowner
NAME	AFFILIATION
	07/02/2019
SIGNATURE	DATE

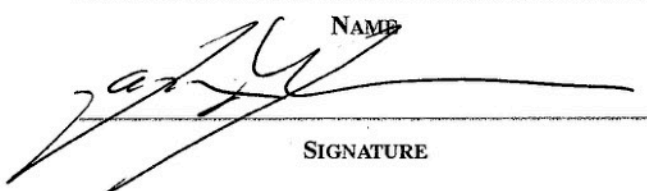
Castle Valley Fire District Wildfire Preparedness Plan 2019

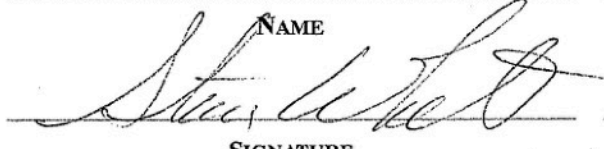
Declaration and Concurrence Page, continued

Rick Bailey	Grand County Emergency Manager
NAME	AFFILIATION
	7 July 2019
SIGNATURE	DATE

Greg Halliday	Grand County Council Member, Firefighter, Homeowner
NAME	AFFILIATION
	3 July 2019
SIGNATURE	DATE

Bruce Jenkins	State Fire Warden
NAME	AFFILIATION
	7/10/19
SIGNATURE	DATE

Jason Johnson	FFSL
NAME	AFFILIATION
	7/10/2019
SIGNATURE	DATE

Steve White	Grand County Sheriff
NAME	AFFILIATION
	7/9/19
SIGNATURE	DATE

Castle Valley Fire District Wildfire Preparedness Plan 2019

Randy Ward

Daystar Academy Director

NAME


AFFILIATION

7.4.2019

SIGNATURE

DATE

INTRODUCTION

Over 600 of Utah's communities have been classified as "at risk" of wildfire. The safety of the citizens of any community and the protection of private property and community infrastructure is a shared responsibility between the citizens; the owner, developer or association; and the local, county, state and federal governments. **The primary responsibility, however, remains with the local government and the citizen/owner.**

The purpose of wildfire preparedness planning is to...

- Motivate and empower local government, communities, and property owners to organize, plan, and take action on issues impacting the safety and resilience of values at risk
- Enhance levels of fire resilience and protection to the communities and infrastructure
- Identify the threat of wildland fires in the area
- Identify strategies to reduce the risks to structures, infrastructure and commerce in the community during a wildfire
- Identify wildfire hazards, education, and mitigation actions needed to reduce risk
- Transfer practical knowledge through collaboration between stakeholders toward common goals and objectives

Outcomes of wildfire preparedness planning...

- Facilitate organization of sustainable efforts to guide planning and implementation of actions:
1. Fire adapted communities 2. Resilient landscapes 3. Safe and effective fire response
- Improve community safety through:
 - ✓ Coordination and collaboration
 - ✓ Public awareness and education
 - ✓ Firefighter training
 - ✓ Fuel modification
 - ✓ Improved fire response capabilities
 - ✓ Fire prevention
 - ✓ Development of long-term strategies

RESOURCES

For resources to complete a wildfire preparedness plan for your community, consider organizations such as the following:

- ✓ Local / Primary fire protection provider
- ✓ Local Resource, Conservation and Development Districts
- ✓ Utah Division of Forestry, Fire and State Lands
- ✓ Utah State Fire Marshal (Dept. of Public Safety)
- ✓ Utah Division of Emergency Management
- ✓ Utah Living With Fire
- ✓ Local fire agencies
- ✓ Local emergency management services
- ✓ USDA Forest Service
- ✓ U.S. Department of Interior Agencies
- ✓ Utah Resource Conservation Districts
- ✓ Utah Soil Conservation Districts

Castle Valley Fire District Wildfire Preparedness Plan 2019

INTRODUCTION

Over 600 of Utah’s communities have been classified as “at risk” of wildfire. The safety of the citizens of any community and the protection of private property and community infrastructure is a shared responsibility between the citizens; the owner, developer or association; and the local, county, state and federal governments. **The primary responsibility, however, remains with the local government and the citizen/owner.**

The purpose of wildfire preparedness planning is to...

- Motivate and empower local government, communities, and property owners to organize, plan, and take action on issues impacting the safety and resilience of values at risk
- Enhance levels of fire resilience and protection to the communities and infrastructure
- Identify the threat of wildland fires in the area
- Identify strategies to reduce the risks to structures, infrastructure and commerce in the community during a wildfire
- Identify wildfire hazards, education, and mitigation actions needed to reduce risk
- Transfer practical knowledge through collaboration between stakeholders toward common goals and objectives

Outcomes of wildfire preparedness planning...

- Facilitate organization of sustainable efforts to guide planning and implementation of actions:
1. Fire adapted communities 2. Resilient landscapes 3. Safe and effective fire response
- Improve community safety through:
 - ✓ Coordination and collaboration
 - ✓ Public awareness and education
 - ✓ Firefighter training
 - ✓ Fuel modification
 - ✓ Improved fire response capabilities
 - ✓ Fire prevention
 - ✓ Development of long-term strategies

RESOURCES

For resources to complete a wildfire preparedness plan for your community, consider organizations such as the following:

- ✓ Local / Primary fire protection provider
- ✓ Local Resource, Conservation and Development Districts
- ✓ Utah Division of Forestry, Fire and State Lands
- ✓ Utah State Fire Marshal (Dept. of Public Safety)
- ✓ Utah Division of Emergency Management
- ✓ Utah Living With Fire
- ✓ Local fire agencies
- ✓ Local emergency management services
- ✓ USDA Forest Service
- ✓ U.S. Department of Interior Agencies
- ✓ Utah Resource Conservation Districts
- ✓ Utah Soil Conservation Districts

STATEMENT OF LIABILITY

The activities suggested by this template, associated checklist and guidance document, the assessments and recommendations of fire officials, and the plans and projects outlined by the community wildfire council, are made in good faith according to information available at this time. The Utah Division of Forestry, Fire and State Lands assumes no liability and makes no guarantees regarding the level of success users of this plan will experience. Wildfire still occurs, despite efforts to prevent it or contain it; the intention of all decisions and actions made under this plan is to reduce the potential for, and the consequences of, wildfire.

Castle Valley Fire District Wildfire Preparedness Plan 2019

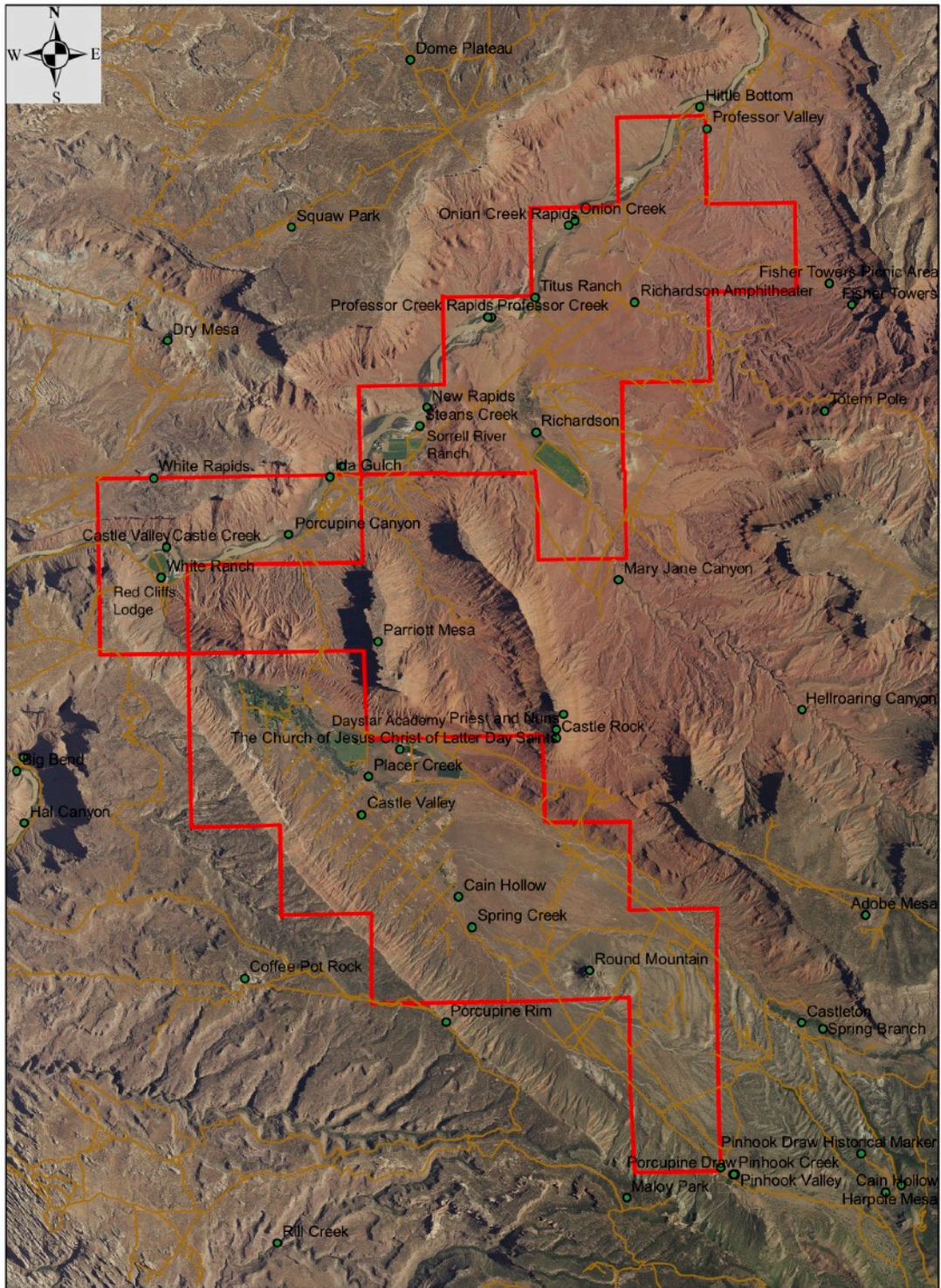
This document provides the outline for and specifies the information recommended for inclusion in a wildfire preparedness plan. **Completed Community Wildfire Preparedness Plans should be submitted to the local Area Manager or Fire Management Officer with the Utah Division of Forestry, Fire and State Lands for final concurrence.**

Page Intentionally Left Blank

Castle Valley Fire District Wildfire Preparedness Plan 2019

PLANNING OVERVIEW

Castle Valley Fire District



0 0.5 1 2 Miles

Castle Valley Fire District Wildfire Preparedness Plan 2019

Briefly describe the overall planning process that took place to complete this plan. Be sure to include a timeline of the events/meetings, the organizations and partners that participated, a description of why this planning process was initiated, and the overall intended outcome of the process, and how outcomes were accomplished. This is much like the information described above (purpose and outcome) but tailored to your community. If desired, please acknowledge any individuals or organizations that were essential to accomplishing the final plan.

The Community Fire Plan for Castle Valley was developed by the district Fire Commission over a 17 year period beginning in 2002, with significant and valuable assistance from Firewise USA, the Utah Dept. of Natural Resources (Div. of Forestry, Fire and State Lands, WUI Coordinator), and the Grand County Fire Warden. Many individuals, stakeholders and agencies were involved, and Fire Commissioners charged with development and oversight over the tenure of the CWPP included Ron Mengel, Bob Lippman, and Leta Vaughn. Other agencies consulted and represented included the U.S. Forest Service, U.S. Bureau of Land Management, Utah School Institutional Trust Lands Administration, Grand County Sheriff's Office and Emergency Manager, Grand County Weed Supervisor, Town of Castle Valley, and Castle Valley Volunteer Fire Department.

The focus, goals and objectives of the planning process have included community wildfire education and resources, identification and marshaling of community resources, assistance to property owners in creating defensible space, interagency cooperation to create a community protection zone and shaded fuel break, cooperative efforts to implement fuels reduction projects that are also sensitive to ecological considerations and watershed protection, restoration of burned and impacted areas, community emergency planning, and support for development of the Castle Valley Volunteer Fire Department.

Castle Valley Fire District Wildfire Preparedness Plan 2019

PLAN OVERVIEW MAP

Area of Interest

PARTNERSHIPS AND COLLABORATION

Briefly describe surrounding lands and the partners involved in coordinating the fuels treatments identified in the CWPP. This section can be added to as new projects and partners are developed. Community buy-in and desires to support and move these projects forward is critical to overall success.

The Grand County Service Area for Castle Valley Fire Protection is located at the foot of the La Sal Mountains, 17 miles east of the City of Moab. The area includes most of the physiographic landform of Castle Valley, the incorporated town of Castle Valley, and area within the Colorado River corridor. The fire district includes lands administered by the BLM, US Forest Service, State of Utah School Trust (SITLA), private landowners and a non-profit land trust (Utah Open Lands). Castle Valley, at 4400 ft to 6000 ft. elevation, is high desert with typical desert vegetation consisting of sagebrush, rabbit brush, black brush, pinion pine and juniper trees, cottonwoods, and various cultivated trees and shrubs. Invasive fuels such as cheatgrass, tamarisk, Russian olive, and Russian thistle are present in most areas of the district. The valley is narrow and deep, being approximately twelve miles long and one and one half miles wide, and is drained by Castle Creek (and its intermittent tributaries) and Placer Creek (intermittent). The west edge of the valley is extremely steep-sloped, abutting the 2000 foot escarpment of Porcupine Rim. The head or south end of the Valley is defined by heavy fuel loading, increasing slope and no natural or man-made fire breaks. The east edge of the valley is bounded by cliffs, and also traversed by the Castleton/LaSal Mt. Loop Road which handles significant tourist and recreational traffic. The foot or north end of the valley is bounded by cliffs, and defined as the green belt due to the dense vegetation growth adjacent to Castle Creek and around several natural water sources.

Homes in the valley are very diverse in setting, value, and architecture. The Castle Valley River Ranches subdivided area of the fire district was originally platted with approximately 443 five-acre lots, zoned for single family residences. These lots are not built out as of this writing. Lots on which homes have been built, frequently have multiple structures and generally lack defensible space. Access to homes is often difficult due to narrow gravel and dirt roads, cross-road drainages prone to intermittent flooding, steep grades and limited or tight cul-de-sacs the ends of most roads. These conditions can create challenges for fire fighting equipment to access properties safely. The singular and steep public road ingress/egress to and from Castle Valley also presents a potential challenge to access, emergency services, public safety, and evacuation. The community is also challenged by the historic, non-topographic layout of lots, the unpaved roads that access the lots, steep western slopes, and significant drainage and flooding issues. The town does not provide municipal water or a water supply for fire protection; however, the fire district owns and maintains a well, and has access to other water sources.

Red Cliffs Lodge, Sorrel River Ranch are two commercial entities that reside within the Fire District. Both provide overnight lodging and food for visiting tourists. Red Cliffs Lodge has it's own water hydrant system which the Castle Valley Fire Department will use for fighting fires within the ranch boundaries. Sorrel River Ranch has two large water tanks that hold 25,000 gallons of water. These are connected to hydrant system at the resort across the highway. They have hydrants located all over the farm, especially near the housing that could be used for fire suppression. The CVFD carry cam lock

Castle Valley Fire District Wildfire Preparedness Plan 2019

adapters that transitions to our couplings in some of the engines. I think they irrigate their fields from pumps located in the river.

Castleton and Willow Basin residential communities are located up Castle Creek drainage, in the south end of the valley. Castleton sits at 5,800ft elevation and Willow Basin sits at 8,500ft respectively. There are approximately 35 homes, the majority being vacation cabins. The Castleton and Willow Basin residential areas are bordered by BLM and USFS lands. Willow Basin completed a Community Wildfire Protection Plan in February 2010, which outlines the challenges and needs of the community. The vegetation type surrounding these communities include: ponderosa pines, dense oak underbrush, dense pinyon and juniper stands, and mixed mountain shrub communities. Pinyon/juniper, gambel oak and mountain shrub woodlands have proven susceptible to fast moving and intense fire due to live fuel layers (gambel oak and other shrub species) that have increased with lack of natural fire activity. The access routes are narrow and over grown by very flammable vegetation, which poses a significant risk to the public, residents and firefighters. There are few homes that have defensible space, and the fuel break that was created by the State of Utah is in need of maintenance. The communities of Castleton and Willow Basin have opted not to be annexed by the Castle Valley fire district, but the fire department currently exercises discretionary responses to these areas.

Castle and Placer Creeks have been identified as major recharge sources for the unconsolidated aquifer that provides domestic water, via private wells, to the residents of Castle Valley; the water supply has been officially designated as a Sole Source Aquifer by the US EPA. In 2008, The Porcupine Ranch Fire severely burned 17% of the Placer Creek Watershed (see Castle Valley Watershed map in appendix C). The post-fire effects on the watershed have yet to be realized, however, such an event is known to be detrimental to water quality and quantity. A resulting debris flow did occur the following year, which had significant surface impacts on the community. Currently, the Castle Creek Watershed is also at risk because it shares similar vegetation conditions and types, topography and weather patterns that promoted the Porcupine Ranch Fire into a fast moving, high-intensity fire. The fire district has included the Placer Creek and Castle Creek Watersheds within its CWPP boundary. This has been done primarily for two reasons: (1) firefighter safety (as the Castle Valley VFD is the first to respond to fires in these watershed areas and in the Castleton and Willow Basin residential areas), and (2) watershed health (as Castle Valley has a high, vested interest in these two watersheds by including them in the CWPP, thus allowing funding to become more available for creating defensible space around homes, and to reduce hazardous fuels on the public lands.

Services in the community are extremely limited. The district fire department is a volunteer unit under County authority, and must address both structural and wildland fires, in a wildland-urban interface (WUI). The fire department presently has eight engines (3 structural, 4 wildland, and 1 tender) capable of carrying approximately 8,500 gallons of water to many areas of the valley. These vehicles range from one new (2007) structural engine, to former military vehicles converted to fire service. The fire department has access to several reliable water sources including a well at the centrally located, Fire Station 1, and a hydrant valve on a high-pressure pipeline owned and maintained by the adjacent Daystar Academy. Also a well in close vicinity to Station 2 within the Town. There are no local police or County emergency medical services within the valley and residents must rely on services provided by Grand County, BLM, US Forest Service to obtain assistance. In 2014, an emergency first responder network was developed and activated for Castle Valley, under the authority of Grand County EMS; one

Castle Valley Fire District Wildfire Preparedness Plan 2019

ambulance is deployed in Castle Valley and available for first responder use, but patient transport currently is not authorized.

Several projects have been identified by the CWPP planning committee as priorities for the community and the various adjacent land management agencies and entities. These include a maintained, shaded fuel break that follows the existing fence line roads along the south and east boundaries of the Castle Valley River Ranchos development within the Town of Castle Valley, to be coordinated with private landowners along the boundary, for various thinning options. When grant funding allows, hand crews, mechanical treatments and fuels chipping will also be made available to private landowners within the valley for creating and maintaining defensible space. Fuels reduction and thinning options will also be pursued for the Greenbelt area within and adjacent to Castle Creek, in the lower valley. Several lots encompassing the Greenbelt are owned by the Town of Castle Valley.

Castle Valley Fire District Wildfire Preparedness Plan 2019

PART I COMMUNITY DESCRIPTION

Community Legal Structure			
List the government entities associated with the community – city, town, unincorporated community, special service district, homeowner association(s), other.			
Organization	Contact Person	Phone Number	E-mail
CVFD	Chief Ron Drake	435-259-8588	rimshadow35@gmail.com cvfpa@frontiernet.net
Bureau of Land Management	Jason Kirks	435-259-2194	jkirks@blm.gov
State of Utah, Div. Forestry Fire and State Lands	Ben Huntsman	801-538-5413	benhuntsman@utah.gov
Grand County Fire Warden	Bruce Jenkins	435-220-0179	bjenkins@utah.gov
US Forest Service, Manti-LaSal N.F., Moab Ranger District	Michael Diem	435-259-7155	mdiem@fs.fed.us
US Forest Service, South Zone AFMO/Fuels	Mark Atwood	435-669-4666	matwood02@fs.fed.us
SITLA	Brian Torgerson	435-259-7417	bryantorgerson@utah.gov
Grand County Emergency Manager	Rick Bailey	435-259-8115	rbailey@grandcountysheriff.org
Grand County Council	Greg Halliday	435-259-4606	lasalfintlock@yahoo.com council@grandcountyutah.net
Executive Director, Utah Open Lands	Wendy Fisher	801-463-6156	wendy@utahopenlands.org
CV firefighter/Fire Commissioner/home owner/CERT representative	Bob Russell	435-259-4561	bobrussell@castlevalleyfire.org
Moab Fire Chief, MFD	TJ Brewer	435- 259-5557	moabfire1@gmail.com
Grand County Weed Supervisor	Tim Higgs	435-259-1369	twhiggs@grandcountyutah.net
Town of Castle Valley Mayor	Jazmine Duncan	435-259-1064	jazmined@castlevalleyutah.com
Plateau Restoration	Tamsin McCormick	435-259-7733	tamsin@frontiernet.net
Grand County Sheriff	Steve White	435-259-8115	swhite@grandcountysheriff.org
State of Utah, Div. Forestry, Fire and State Lands	Jason Johnson	435-259-3762	jasonajohnson@utah.gov

Castle Valley Fire District Wildfire Preparedness Plan 2019

Population	
Approximate number of homes within TCV	291
Approximate number of lots within TCV	443
Approximate number of full-time residents within TCV	319
Approximated number of part-time residents within TCV	100-500
All other residents within the fire district	35
Approximate number of commercial entities within entire fire district	4
Approximate accommodations at Sorrel River Ranch and Red Cliffs Lodge	632
<i>Notes/comments: visitor population is based on people visiting properties/people in the Castle Valley area. Casual tourists passing through the area are not included in the visitor estimate.</i>	

Restricting Covenants, Ordinances, etc. (Attach as appendix)	
For example, home association bylaws may have requirements regarding building construction materials or vegetation removal, or regarding access in a gated community.	
Source	Details
<i>See appendix B</i>	

Castle Valley Fire District Wildfire Preparedness Plan 2019

Access
Directions to community
<p>From Moab, Utah, travel north on route 191 to route 128. Turn east (right) on 128 and drive approximately 17 miles to LaSal Mt. Loop Road/Castleton Rd. Turn South (right), onto Castleton (Loop) Road and drive approximately 1.25 miles to Castle Valley Dr.</p> <ol style="list-style-type: none"> 1. To enter Castle Valley, turn right on Castle Valley Dr., at the mailbox hub, and enter the town of Castle Valley 2. To enter the area referred to as Castleton; continue on the Castleton (Loop) Rd. for approximately 5 miles. <p>Castleton has no formal entrance but is the collection of homes along the Castleton Rd. A turnoff to the Porcupine Ranch area is to the right, at mp 8.1. The Castleton Road continues up the mountain, to Gateway, Colorado. The LaSal Mountain Loop Road turnoff is to the right, at mp 10.4 , and continues appr. 41 miles to route 191.</p>
All-weather access
<p>Rte. 128, Castleton (Loop) Rd. and Castle Valley Drive as well as all roads at Sorrel River Ranch are all paved. All other roads in the TCV, Redcliffs Lodge etc... are dirt or gravel. Access may also be compromised by a steep hill (Pace Hill) between Hwy. 128 and Castle Valley, which is subject to flooding and ice.</p>
Seasonal access
<p>No restrictions (Note that access may be compromised by seasonal flooding, streambed crossings, mud, snow, ice, rockfalls, and steep slopes, and that certain (rim side) roads within the town of Castle Valley are not maintained/plowed during winter months)</p>

Roads								
Reset Option Buttons	None	Some	All	Adequate	Inadequate	% Pavement	% gravel	% dirt
Roads within TCV				X		24	10	66
Roads within Fire District (including TCV)				X		55	35	10
Road signs present	<input checked="" type="checkbox"/>	<input checked="" type="checkbox"/>	<input checked="" type="checkbox"/>	X	<input checked="" type="checkbox"/>			
Will support normal flow of traffic	<input checked="" type="checkbox"/>	<input checked="" type="checkbox"/>	<input checked="" type="checkbox"/>	X	<input checked="" type="checkbox"/>			
Are loop roads	<input checked="" type="checkbox"/>	X	<input checked="" type="checkbox"/>	<input checked="" type="checkbox"/>	<input checked="" type="checkbox"/>			

Castle Valley Fire District Wildfire Preparedness Plan 2019

Are dead-end roads	<input type="checkbox"/>	X	<input type="checkbox"/>	<input type="checkbox"/>	<input type="checkbox"/>			
Turnaround space available at end of road for emergency equipment (based on turning radius listed in the guidance document)	<input type="checkbox"/>	X	<input type="checkbox"/>	<input type="checkbox"/>	<input type="checkbox"/>			

Notes/comments:

1. Most will support 40,000# of traffic.
2. Most (95%) roads branch off of Castle Valley Dr. and dead end. There is generally insufficient turn-around space for heavy equipment at the ends of these roads (based on turning radius listed above). The roads that branch west (towards Porcupine Rim) are often steep and difficult to access with emergency equipment, especially in winter as roads within a designated rim zone are unmaintained/unplowed during winter (see Appendix C).
3. The Town of Castle Valley is currently installing 45' radius cul-de-sacs at ends of side roads at a rate of 2 per year.

Driveways						
Reset Option Buttons	Adequate	Inadequate	No	Few	Most	All
Most driveways width and height clearance, road grades and vegetation appearance are...	X	<input type="checkbox"/>	<input type="checkbox"/>	<input type="checkbox"/>		<input type="checkbox"/>
Individual homeowners have posted their name and address	X	<input type="checkbox"/>	<input type="checkbox"/>	<input type="checkbox"/>		<input type="checkbox"/>

Notes/comments:

1. The width, height clearance, road grade and vegetation appearance for most driveways are generally adequate for emergency equipment, although some lots on steep grades (west rim area) or within drainage areas present compromised access for large equipment.
2. Homeowners have been encouraged to post their name and lot numbers on their driveways, but compliance is incomplete.

Castle Valley Fire District Wildfire Preparedness Plan 2019

Structures						
Reset Option Buttons	None	Few	Some	Many	Most	All
Wood frame construction	<input type="checkbox"/>	<input type="checkbox"/>	<input type="checkbox"/>	<input type="checkbox"/>	X	<input type="checkbox"/>
Have wood decks or porches	<input type="checkbox"/>	<input type="checkbox"/>	<input type="checkbox"/>	<input type="checkbox"/>	X	<input type="checkbox"/>
Have wood, shake or shingle roofs	<input type="checkbox"/>	X	<input type="checkbox"/>	<input type="checkbox"/>	<input type="checkbox"/>	<input type="checkbox"/>
Are visible from the main subdivision road	<input type="checkbox"/>	<input type="checkbox"/>	<input type="checkbox"/>	<input type="checkbox"/>	X	<input type="checkbox"/>
<i>Notes/comments:</i>						

Bridges, Gates, Culverts, other			
Reset Option Buttons	No	Some	All
Bridges support emergency equipment	<input type="checkbox"/>	<input type="checkbox"/>	X
Gate provides easy access to emergency equipment	<input type="checkbox"/>	X	<input type="checkbox"/>
Culverts are easily crossed by emergency equipment	<input type="checkbox"/>	X	<input type="checkbox"/>
<i>Notes/comments:</i>			
<p>1. All gates provide easy access to emergency equipment (one gate, at Fire Station 1, eastern end of Shafer Lane extension, is normally locked, as the Shafer Lane extension is not a public road, but designated for emergency and administrative uses only).</p> <p>2. It is believed that all public culverts adequately support emergency/heavy equipment; although some private culverts may be inadequate.</p>			

Castle Valley Fire District Wildfire Preparedness Plan 2019

Utilities						
Reset Option Buttons	Below ground	Above ground	Provided by	Phone number	% marked with a flag or other highly visible means	% utilized
Telephone service	X	X	Frontier & River Canyon Wireless*	435-259-5157 & 435-259-		
Electrical service	X	X	Rocky Mountain Power	435-259-5920		
Are there homes utilizing propane?	X	X			80%	
Are there homes utilizing natural gas?	<input type="checkbox"/>	<input type="checkbox"/>				
<i>Notes/comments:</i> River Canyon Wireless provides phone service on via wifi See APPENDIX C for GIS generated list and map of propane tanks, wells and septic fields (Note that this list is incomplete, as some residents denied access for GIS mapping).						

List locations of propane tanks above ground:		
Owner	Address, lat/long, etc.	Size
<i>Notes/comments: See APPENDIX C for GIS generated list and map of propane tanks, wells and septic fields (Note that this list is incomplete, as some residents denied access for GIS mapping).</i>		

Castle Valley Fire District Wildfire Preparedness Plan 2019

Primary Water Sources			
Approximate % homes using central water system		0%	
Approximate % homes using individual wells		95%	
Approximate % homes having additional private water source		5%	
Water provided by		Phone	
<i>Notes/comments:</i> The Town of Castle Valley is considering a municipal well and fill station for the future.			

List locations of water sources:		
Owner	Address, lat/long, etc.	Accessible
Daystar Academy	UTM: 639381 E 4279140 N	Permanent
Daystar Academy	UTM: 639389 E 4278947 N	Intermittent
Daystar Academy	UTM: 639479 E 4278895 N	Intermittent
Pond 1 Green Belt Lot 375 (Zuckerman)	Homestead and Castle Creek Lane UTM: 636323 E 4279990 N	Intermittent
Pond 2 Green Belt (Lot 373) (Jorgen)	Homestead and Castle Creek Lane UTM: 636431 E 4280014 N	Intermittent
Pond 3 Green Belt (Lot 373) (Jorgen)	Homestead and Castle Creek Lane UTM: 636493 E 4280040	Intermittent
Pond 4 (Erley)	Castle Valley Dr. and Holyoak Lane UTM:	Permanent
Pond 5 (R Schwartz)	Just off Loop Rd in Castleton UTM: 645868 E 4274152 N	Permanent
Pond 6 (CFI)	Castle Rock Ranch UTM: 638431 E 4279104 N	Permanent
Pond 7 (BLM)	Daystar Academy Irrigation Storage Pond "Quakey Shake" Castleton Rd. UTM: 642103 E 4277185 N	Permanent
Colorado River	BLM Boat Ramp ("Take-out Beach")	Permanent
Colorado River	Red Cliffs Ranch Resort Boat Ramp	Permanent

Castle Valley Fire District Wildfire Preparedness Plan 2019

Colorado River	Rocky Rapid Boat Ramp	Permanent
Fire Station 1	Pressurized Irrigation at Driveway	Intermittent
Well (high volume) Castle Valley Fire District	Lot 13 Chamisa Lane	Permanent
Swimming Pool (lot 113) End of Pace Lane	UTM: 638885 E 4277915 N	Permanent
Fire Trailer (lot 365/Upper 80) with pump/foam/hose reel Bob Lippman	Lot 365 Castle Valley Drive (upper 80)	Intermittent
Cistern David Smith Residence	Lot 381 and 382 Homestead Lane	Permanent
Professor Valley Pond	Professor Valley Ranch 1 acre foot pond	Permanent
6000 County Water Tender	Parked at Fire Station 1	Intermittent
<i>Notes/comments: * Ponds: measure 1000's of gallons; Creeks; measure in cfs during fire season</i>		

Castle Valley Fire District Wildfire Preparedness Plan 2019

PART II:

RISK ASSESSMENT

Estimated Values at Risk	
Provide an approximation of the estimated current values of residential and commercial property in the area. The County Assessor should be able to assist with this information.	
Estimated values at risk of commercial and residential property	\$103,393,917
Year	2019

Castle Valley Fire District Wildfire Preparedness Plan 2019

Natural Resources at Risk

Describe the natural resources at risk in the area, such as watershed, forest products, wildlife, recreation tourism, etc.

Castle Valley Fire District Wildfire Preparedness Plan 2019

Water Quality: Castle and Placer Creeks have been identified as major recharge sources for the unconsolidated aquifer that provides domestic water, via private wells, to the residents of Castle Valley; the water supply has been officially designated as a Sole Source Aquifer by the US EPA.

Wildlife: The Utah Division of Wildlife Resources has identified areas within the municipal boundaries of the Town of Castle Valley as critical winter habitat for the La Sal Mountain Mule Deer herd. Land within the Town boundaries has been identified by the Utah Division of Wildlife Resources as critical calving grounds for the La Sal Mountain Mule Deer herd. Safeguarding these areas as open lands is essential for protection of wildlife and for the preservation of our rural atmosphere.

Natural resources at risk from wildfire in the Castle Valley planning area vary based on area. Resources at risk and potential fire impacts vary based on the location: Castle Valley Town, the talus slopes, Castle Creek bottom, and the Colorado River bottom.

On the flats in Castle Valley, where most of the homes are located, the primary risk is to life and property. In this highly modified environment there are also natural resources that can be impacted by fire: The patches of trees and shrubs scattered between the homes provide important hiding cover for small animals and nesting and perching sites for birds. Some species, like tamarisk or Russian olive would re-sprout after fire, but other species that reproduce by seed could take a long time to reestablish. Cheatgrass can be found in a number of areas around the valley and can be expected to increase with repeated fire. As cheatgrass increases it displaces native forbs and bunchgrasses and reduces the value of the grasslands to wildlife and other grazers. Increasing cheatgrass also encourages more fire, perpetuating the cycle. Another possible consequence of fire in this area is water contamination. If fire burns through settled areas with storage sheds, trash and debris piles, parked or abandoned vehicles, and other equipment, subsequent rains can carry contamination and contaminate wells and surface waters.

Talus slopes: The talus slopes on either side of the valley are covered with pinyon-juniper forest, sagebrush, and mountain shrubs. The forest provides important hiding cover for deer and other wildlife, as well as nesting and foraging space habitat for birds. Fire in this area could have detrimental effects for soil and slope stability by exposing the soil to the effects of heavy summer rainstorms. In some areas the effect could be positive if small shrubs, grasses, and forbs are released by the removal of the pinyon-juniper overstory. Generally, these plants are better at conserving and protecting the soil than pinyon and juniper because these trees are aggressive competitors for soil moisture and as they increase tend to crowd out understory species. As in the main part of the valley, cheatgrass is present on the talus slopes and could increase with fire.

Creek Bottom: The Castle Creek bottom represents the richest wildlife habitat in the Castle Valley planning area. There is a great diversity of plant life –forbs, reeds, grasses, shrubs and trees of many species. A wide variety of wildlife also uses the creek bottom: Deer, turkey, squirrels, ducks, and a wide variety of perching birds are frequently seen. It is not uncommon to see signs of beavers and a variety of predators including bobcats, coyotes, and even mountain lion. In many areas there are dense fuels that could easily allow fire spread. A primary result of fire in the creek bottom could be a loss of wildlife habitat. Other risks include a possible loss of bank stability leading to increased meandering and soil erosion. Such loss could also lead to increased headcutting upstream. Post-fire many of the species in the creek bottom would re-sprout fairly quickly, including many native shrubs, grasses, sedges, and reeds. The tree component could be negatively affected because non-native invasives like Russian olive and Tamarisk would be expected to re-sprout quickly while native trees like cottonwood and box elder would need to regrow from seed or be planted and protected from browsing deer.

River bottom: The river bottoms along the Colorado River have many of the species and risks found in the Castle Creek river bottom. Similarly, we would expect fire in this area to lead to a loss of wildlife habitat and an increase in soil erosion. Heavy recreational use may inhibit a rapid recovery in some areas along the river. In addition, the river corridor has additional invasive species, including knapweed, whitetop, and various thistles that are not common in Castle Creek. All of these could increase their ranges after fire.

Air quality is also affected by fire. Large, long duration fires can negatively impact the health and quality of life for visitors and residents. Because of the closed valley setting Castle Valley is vulnerable to fire in the La Sal mountains.

Castle Valley Fire District Wildfire Preparedness Plan 2019

The following information is based on the Communities At Risk (CARs) list that was developed cooperatively at the local and state level to assist land management agencies and other stakeholders in determining the scope of the WUI challenge and to monitor progress in mitigating the hazards in these areas. This information is updated annually through the interagency fuel groups. Input the fields that are reflected on the state list found on our website at forestry.utah.gov.

Fire Occurrence: Number of fires in the area for the last 10 years 2009 to present			
<input type="checkbox"/>	0	No Risk	
<input type="checkbox"/>	1	Moderate	0 to 1 fire/township
<input checked="" type="checkbox"/>	2	High	2 to 14 fires/township
<input type="checkbox"/>	3	Extreme	Greater than 14 fires/township
Rating			<input type="button" value="Reset Option Buttons"/>

Area Fire History			
Month/Year of fire	Ignition point	Ignition source	Acres burned
5/2000	Lat. 38-40-03 Long. 109-17-09	Lightning	660
6/2003	Lat. 38-35-32 Long. 109-17-27	Lightning	4
6/2003	Lat. 38-35-40 Long. 109-18-31	Lightning	2
5/2003	Lat. 38-49-6 Long. 109-17-03	Human	44
7/2003	Lat. 38-36-5 Long. 109-19-46	Lightning	0.1
6/2006	Lat. 38-37-55 Long. 109-22-01	Lightning	220
8/2007	Lot 43 Lazaris Lane	Lightning	Structure
8/2008	Lat. 38-34-45 Long. 109-19-57	Lightning	3277

Castle Valley Fire District Wildfire Preparedness Plan 2019

2/10/2012	Highway 128 mile 9	Trailer wheels overheated	0
4/19/2012	Sorell River Ranch	Mechanical	0 dryer
5/26/2012	413 Cliffview & beyond	unknown/weather	20 acres Structure/WUI
7/13/2012	Castleton Road #1	Lightning	not known
7/13/2012	Castleton Road #2	Lightning	not known
7/20/2012	Porcupine Ranch Rd.	Lightning	4 trees
7/21/2012	Upper 80	Lightning	1 tree
8/23/2012	Creekside Lane	Human	not known
9/24/2012	Adobe Mesa (Assist USFS)	Lightning	not known
9/1/2013	Upper 80s/BLM	Lightning	Juniper trees
5/30/2014	South Round Mountain	Lightning	1/4 acre
6/15/2014	Mile 13, SR 128	Arson	not known
7/11/2014	Castleton Road	Lightning	Tree
7/15/2014	272 Pope Lane/350 Taylor Lane	Lightning	Single Trees
8/25/2014	Gravel Pit Castleton	Lightning	Tree
9/14/2014	Sorrel River Ranch	Human	Structure/Dryer
1/20/15	399 Cliffview Lane	Mechanical	Power Pole Fire
7/22/15	Daystar Academy	Human	1/4 acre grass
7/23/15	Daystar Academy	Human	grass
8/1/2015	Round Mountain Area	Lightning	1/4 acre
9/1/2015	Dewey Bridge Area	Lightning	Single Tree
2/18/2016	Castleton Road	Mechanical	Power Line Fire
3/22/2016	Hittle Bottom off SR128	Not Known	Tree Fire
4/16/2016	Daystar Academy	Human	not known
5/4/2016	Gateway Road, Willow Basin	Mechanical	Car fire
5/29/2016	SR 128 mile 10	Not Known	.64 acre grass
6/7/2016	Miller Lane	Mechanical	Power Pole Fire
6/12/2016	Daystar Academy	Human	.5 Acre

Castle Valley Fire District Wildfire Preparedness Plan 2019

6/25/2016	Chamisa Lane & CV Drive	Not Known	.01 Acre
10/13/2016	Amber Lane	Human	3 Acres
6/27/2017	Castleton Road	Power Line	3.4 Acres
7/12/2017	SR 128 mile 16	Mechanical	Power Pole Fire
8/4/2017	240 Miller Lane	Lightning	3 Acres
9/14/2017	Shafer Lane	Lightning	Single Tree
12/5/2017	Willow Basin	Chimney Fire	Structure
7/2/2018	395 Castle Valley Drive	Human	1/8 Acre
7/7/2018	331 Keogh Lane	Lightning	not known
7/7/2018	End of CV Drive	Lightning	not known
7/7/2018	Porcupine Rim	Lightning	not known
7/8/2018	Base of Adobe Mesa	Lightning	not known
4/27/2019	Castle Creek Lane	Lightning	Single tree base

Fuel Hazard: Assess the fuel conditions of the landscape and surrounding the community			
<input type="checkbox"/>	0	No Risk	
<input type="checkbox"/>	1	Moderate	Moderate to low to control, fire intensities would generally cause moderate damage to resources based on slope, wind speed and fuel. Vegetation Types: Ponderosa pine/mountain shrub, grassland, alpine, dry meadow, desert grassland, Ponderosa pine, Aspen and mountain riparian.
X	2	High	High resistance to control, high to moderate intensity resulting in high to moderate damage to resources depending on slope, rate of spread, wind speed and fuel loading. Vegetation Type: Maple, mountain shrubs, sagebrush, sagebrush/perennial grass, salt desert scrub, Black Brush, Creosote and Greasewood.
<input type="checkbox"/>	3	Extreme	High resistance to control, extreme intensity level resulting in almost complete combustion of vegetation and possible damage to soils and seed sources depending on slopes, wind speed, rate of spread and fuel loading.
Rating			<input type="button" value="Reset Option Buttons"/>

Castle Valley Fire District Wildfire Preparedness Plan 2019

Values Protected: Evaluate the human and economic values associated with the community or landscape, such as homes, businesses and community infrastructure.

<input type="checkbox"/>	0	No Risk	
<input type="checkbox"/>	1	Moderate	Secondary Development: This would be seasonal or secondary housing and recreational facilities.
<input checked="" type="checkbox"/>	2	High	Primary Development: This would include primary residential housing, commercial and business areas.
<input type="checkbox"/>	3	Extreme	Community infrastructure and community support: This would be water systems, utilities, transportation systems, critical care facilities, schools manufacturing and industrial sites. It may also include valuable commercial timber stands, municipal watersheds and areas of high historical, cultural and/or spiritual significance which support and/or are critical to the well-being of the community.
Rating			<input type="button" value="Reset Option Buttons"/>

Insurance Rating

Provide the current insurance rating for the community

ISO Fire Insurance Rating:

Protection Capabilities: Insurance Services Organization (ISO) rating for the community will serve as an overall indicator of the protection capabilities.

<input type="checkbox"/>	1	Moderate	ISO Rating of 6 or lower
<input checked="" type="checkbox"/>	2	High	ISO Rating 7 to 9 (rated at 8b)
<input type="checkbox"/>	3	Extreme	ISO Rating 10
Rating			<input type="button" value="Reset Option Buttons"/>

Fire Occurrence	Fuel Hazard	Values Protected	Fire Protection Capabilities	Overall Rating
				8b
Total: 4-7 Moderate, 8-11 High, 12 Extreme				

Castle Valley Fire District Wildfire Preparedness Plan 2019

The following information is based on the Utah Wildfire Risk Assessment Portal (UWRAP) and Area of Interest (AOI) Summary Reporting Tool. Reports are generated using a set of predefined map products developed by the West Wide Wildfire Risk Assessment (2012) project. The UWRAP provides a consistent, comparable set of scientific results to be used as a foundation for wildfire mitigation and prevention planning in Utah.

Wildland Development Area (WUI) Impacts: Data set is derived using a Response Function modeling approach. To calculate the Wildland Development Area Impact Response Function Score, the Wildland Development Area housing density data was combined with flame length data and Response Functions assignments to represent potential impacts.

Wildfire Threat: A number that is closely related to the likelihood of an acre burning.

Wildfire Risk: Combines the likelihood of a fire occurring (Threat), with those of areas of most concern that are adversely impacted by fire (Fire Effects). Wildfire Threat Index is derived from historical fire occurrence, landscape characteristics including surface fuels and canopy fuels, percentile weather derived from historical weather observations and terrain conditions. Fire Effects are comprised of Value Impacts and Suppression Difficulty.

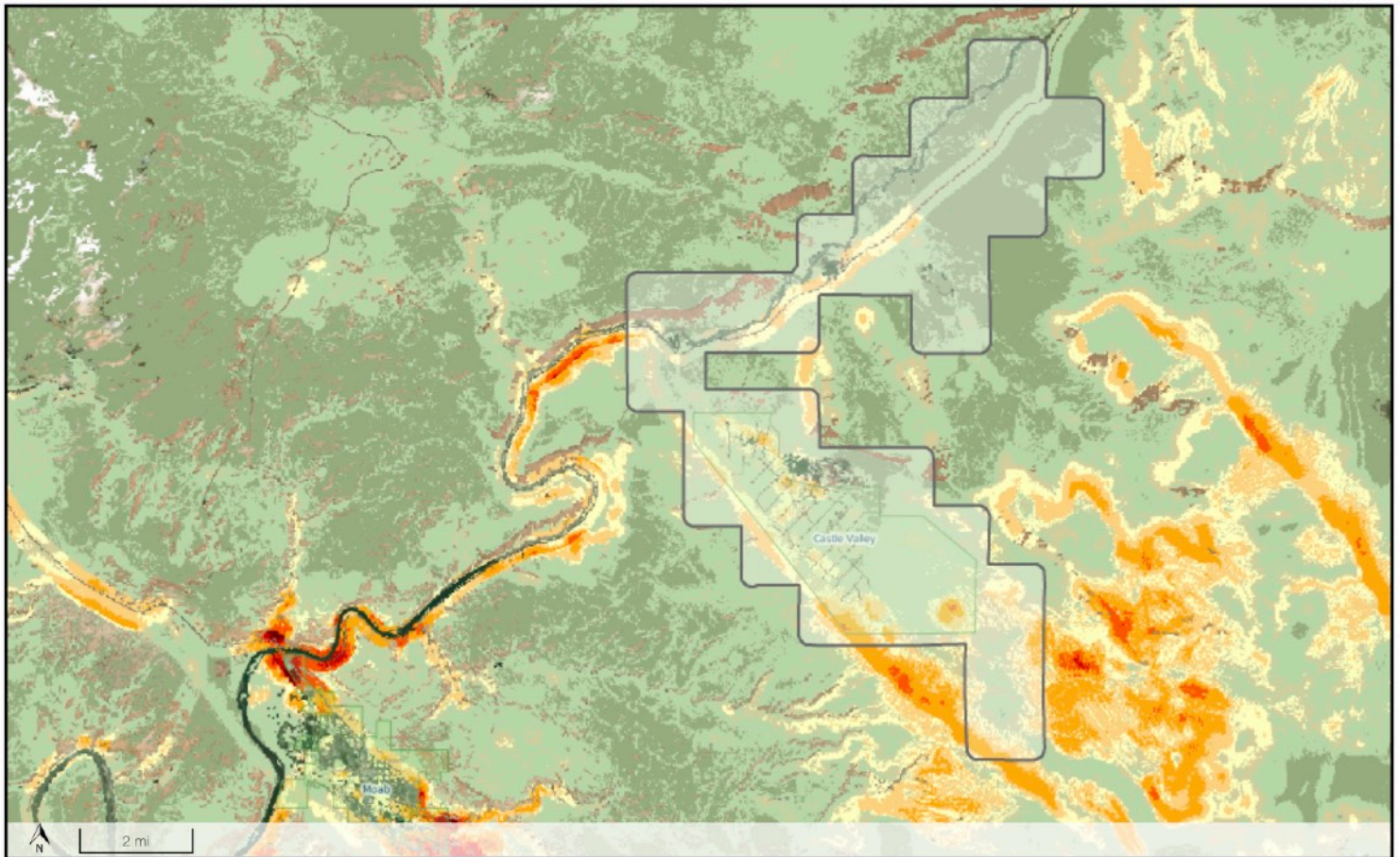
	Total Acres AOI for each Category with the percentages added		
	Wildfire Risk	WUI Impacts	Wildfire Threat
Low (1-4)	21,5297/81.7%	1532/86.4%	22303/84.7%
Moderate (5-7)	4784/18.2%	231/13%	4025/15.3%
High (8-10)	14/.1/5	12/.7	0/0%

Including maps from the UWRAP report may also be beneficial in this section. Consider using the following as an example. *See Appendix for other maps*

- Location Specific Ignitions
- Ignition and Fire occurrence density
- Water Impacts
- Rate of Spread
- Suppression Difficulty
- Fire Effects

Castle Valley Fire District Wildfire Preparedness Plan 2019

CV District Wildfire Risk 2019



Report Created:
6/1/2019 - 1:36:52 PM

Wildfire Risk Assessment Portal
<http://utahwildfirerisk.utah.gov>



The user assumes the entire risk related to their use of the Wildfire Risk Assessment Portal and either the published or derived products from these data. UTAH DNR is providing these data "as is" and disclaims any and implied warranties of merchantability or fitness for a particular purpose. In no event will UTAH DNR be liable to you or to any third party for any profit resulting from any use or misuse of these data.

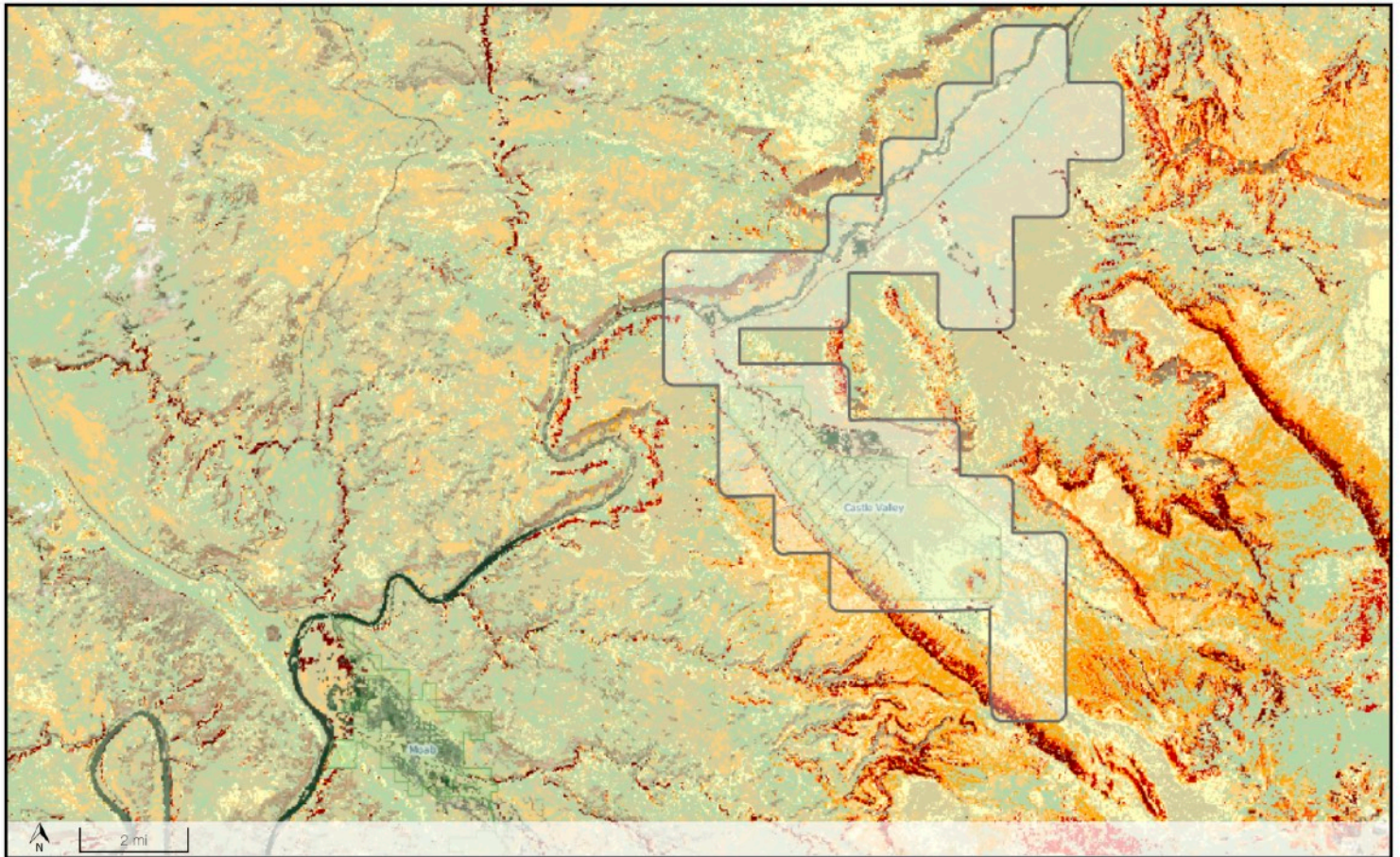
Wildfire Risk

Rate of Spread - Expected

- Urban, Agriculture, Barren or Water
- Very Low < 5.5 ft. / min.
- Low 5.5 to 10.9 ft. / min.
- Low - Moderate 11.0 to 16.4 ft. / min.
- Moderate, 16.5 to 21.9 ft. / min.
- Moderate - High 22.0 to 32.9 ft. / min.
- High 33.0 to 43.9 ft. / min.
- Very High 44.0 to 54.9 ft. / min.
- Extreme \geq 55.0 ft. / min.

Castle Valley Fire District Wildfire Preparedness Plan 2019

CV District Rate of Spread Expected 2019



Report Created:
6/1/2019 - 1:35:54 PM

Wildfire Risk Assessment Portal
<http://utahwildfirerisk.utah.gov>



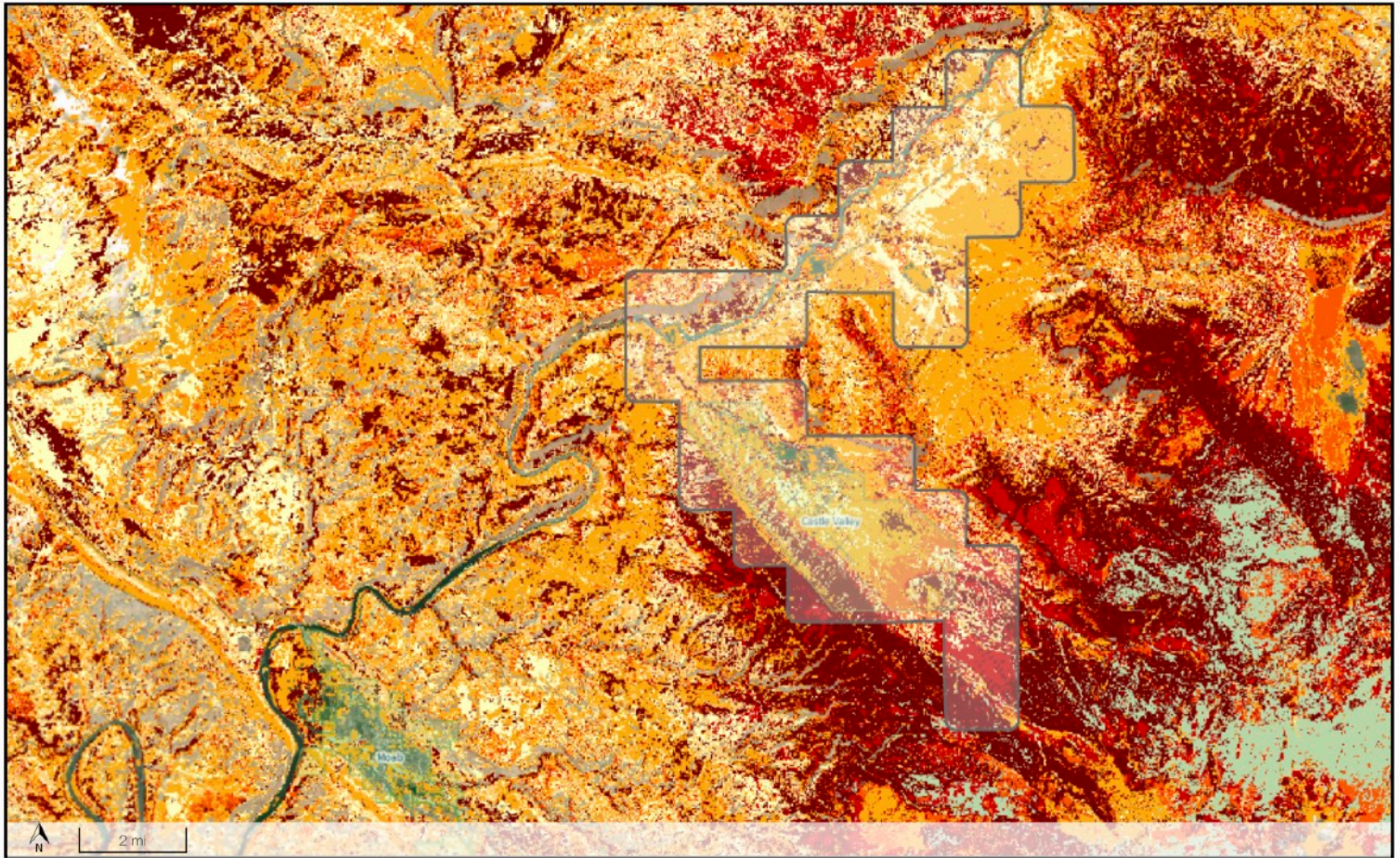
The user assumes the entire risk related to their use of the Wildfire Risk Assessment Portal and either the published or derived products from these data. UTAH DNR is providing these data "as is" and disclaims any and all warranties, whether expressed or implied, including (without limitation) any implied warranties of merchantability or fitness for a particular purpose. In no event will UTAH DNR be liable to you or to any third party for any direct, indirect, incidental, consequential, special or exemplary damages or lost profit resulting from any use or misuse of these data.

Rate of Spread - High

- Urban, Agriculture, Barren or Water
- Very Low < 5.5 ft. / min.
- Low 5.5 to 10.9 ft. / min.
- Low - Moderate 11.0 to 16.4 ft. / min.
- Moderate 16.5 to 21.9 ft. / min.
- Moderate - High 22.0 to 32.9 ft. / min.
- High 33.0 to 43.9 ft. / min.
- Very High 44.0 to 54.9 ft. / min.
- Extreme >= 55.0 ft. / min.

Castle Valley Fire District Wildfire Preparedness Plan 2019

CV District Rate of Spread High 2019



Report Created:
6/1/2019 - 1:34:20 PM

Wildfire Risk Assessment Portal
<http://utahwildfirerisk.utah.gov>

The user assumes the entire risk related to their use of the Wildfire Risk Assessment Portal and either the published or derived products from these data. UTAH DNR is providing these data "as is" and disclaims any and all warranties, whether expressed or implied, including (without limitation) any implied warranties of merchantability or fitness for a particular purpose. In no event will UTAH DNR be liable to you or to any third party for any direct, indirect, incidental, consequential, special or exemplary damages or lost profit resulting from any use or misuse of these data.



Castle Valley Fire District Wildfire Preparedness Plan 2019

Past Accomplishments	
Prevention	<ul style="list-style-type: none"> • <i>Recognized nationally as a Firewise Community (2004).</i> • <i>Formed an active CWPP committee that meets once a month, composed of residents, Mayor and Fire Dept. (2014).</i>
Preparedness	<ul style="list-style-type: none"> • <i>Completed a community wildfire protection plan (CWPP) in 2011.</i> • <i>FEPP acquisition for fire department including a five ton truck was converted to a wildland fire engine in 2016</i> • <i>Training in wildland firefighting including S-190, S-130</i> • <i>Annual Refresher course for firefighters by Fire Warden (RT-130)</i>
Mitigation	<ul style="list-style-type: none"> • <i>Secured a \$300,000 Western States Fire Assistance (SFA) grant in 2013 for mitigation and education purposes. Funds were directed towards vegetation projects; nearly 40 acres have been treated so far. Grant targets a total of 236 acres.</i> • <i>Since 2014, community has contributed approximately \$60,000 of in-kind service, including organizing the LDS youth conference in 2014 to help with fuels mitigation.</i> • <i>Davis property and east exit access improved (2014).</i> • <i>Bi-annual community Chipper Day participation with roughly 75 properties participating.</i> • <i>City has evaluated over 70% of the lots for compliance of vegetation code.</i> • <i>Town of Castle Valley Hazard Mitigation Plan completed in 2015</i>
Maintenance	<ul style="list-style-type: none"> • <i>Provide Chipper day bi-annually for residents to maintain their defensible spaces.</i>
Prevention	<ul style="list-style-type: none"> • <i>Completed 15 lot assessments for residents in 2017 (everyone had an opportunity for assessments).</i>
Mitigation	<ul style="list-style-type: none"> • <i>Removal and treatment of Russian olive and tamarisk along Castle Creek as part of larger effort to reduce these invasive along the Colorado River and its tributaries.</i>
Prevention	<ul style="list-style-type: none"> • <i>Hosted FFSL defensible space discussion-WUI coordinator presented to the community in May 2018</i>
Prevention	<ul style="list-style-type: none"> • <i>Publish a quarterly newsletter that is distributed to residents 8/2016 to present. Contains tips and info about preventing wildfire.</i> • <i>Created a Castle Valley Fire Department website in 2015</i> • <i>Started an annual 4th of July event to help provide education on preventing fires in 2018.</i> • <i>Started providing community conversations about defensible spaces around homes 2019</i>

Castle Valley Fire District Wildfire Preparedness Plan 2019

PART III: RISK REDUCTION GOALS/ ACTIONS

Goals of Plan: Provide a brief statement under the Prevention, Preparedness, Mitigation and Maintenance goals. These should align with the pillars of the National Cohesive Strategy and the Utah Catastrophic Wildfire Reduction Strategy (1. Resilient Landscapes 2. Fire Adapted Communities 3. Wildfire Response).

Identification of Actions: Provide detailed project information. These projects/actions can be mapped/tracked in the Utah WRA portal and should be consistent with a Cooperative Agreement in compliance with the Wildfire Policy if applicable.

GOAL A: PREVENTION – Activities directed at reducing the occurrence of fires, including public education, law enforcement, personal contact.

Goal A.1 –			
Action(s):	Timeline:	Community Lead:	Priority:
<i>Private property – Implement ‘The Defensible Space Checklist’ from Utah Living with Fire Homeowner Guide; (See Appendix M) Creation of a property assessment team with firefighters and community members being trained to perform property firewise assessments.</i>	Ongoing and in planning stages	Private Landowners, FFSL, Castle Valley Fire Dept. (CVFD), Town CV (TCV)	High
<i>Encourage through education firewise landscaping, vegetation and grasses into green spaces and private property where possible (with ecological emphasis on native vegetation).</i>	Ongoing	CVFD, TCV	High
<i>Smokey Sign showing degrees of fire danger within Town limits</i>	Ongoing	CVFD	High
<i>Seek funding resources and in-kind matching for implementation of the above actions</i>	Ongoing	FFSL, CV Fire Commission (CVFC)	High

Castle Valley Fire District Wildfire Preparedness Plan 2019

GOAL B: PREPAREDNESS – Activities that lead to a state of response readiness to contain the effects of wildfire to minimize loss of life, injury, and damage to property. Including access to home/community, combustibility of homes/structures and creating survivable space.

Goal B.1 – Evaluate, upgrade and maintain community wildfire preparation			
Action(s):	Timeline:	Community Lead:	Priority:
<i>Create cul-de-sac turnarounds for all side roads</i>	Ongoing	TCV	High
<i>Annual RT130 refresher course for firefighters</i>	Annually	Fire Warden	High
<i>Notes, updates ,and monitoring</i>			

Goal B.2 – Educate community members to prepare for and respond to wildfire.			
Action(s):	Timeline:	Community Lead:	Priority:
<i>Provide community events eg. Gourd Festival, July 4th to learn about Firewise, emergency evacuation procedures ect...</i>	Ongoing	CVFD, Fire Commission	High
<i>Discussions on Emergency Evacuation Procedures for Town and District</i>	2019	CVFD, Fire Commission, TCV	High
<i>See Appendix O for evacuation procedures in TCV. Still working on evacuation procedures for rest of fire district.</i>			

Castle Valley Fire District Wildfire Preparedness Plan 2019

Goal B.3 – Address identified regulative issues impacting community wildfire prevention and response needs.			
Action(s):	Timeline:	Community Lead:	Priority:
<i>Assess current regulations for updates or additions</i>	2019	Fire Commission, TCV	High
<i>Fire Commission to pass resolution or SOG to Maintain CWPP every 1-2 years</i>	2019	CV Fire Commission	High
<i>Notes, updates ,and monitoring</i>			

Goal B.4 – Evaluate response facilities and equipment.			
Action(s):	Timeline:	Community Lead:	Priority:
<i>Assess and Update Firefighting equip. as necessary</i>	Ongoing	Fire Commission	High
<i>Lot 13 Development</i>	Ongoing	Fire Commission	Low
<i>Notes, updates ,and monitoring: Replaced water tender in April 2019. Started (2019) building an air compressor system to provide all engines with continuous air directly for faster brake fill and faster response time.</i>			

Castle Valley Fire District Wildfire Preparedness Plan 2019

GOAL C: MITIGATION – Actions that are implemented to reduce or eliminate risks to persons, property or natural resources including fuel treatments and reduction.

Goal C.1 – Decrease fuels within the community to reduce wildfire impact in and around the community.			
Action(s):	Timeline:	Community Lead:	Priority:
<i>Bi-annual Chipper day for residents to reduce fuels on their property</i>	ongoing	CVFD, FFSL	High
<i>Provide standby help for private land owners to burn weeds etc... in spring and fall</i>	ongoing	CVFD	High
<i>Provide complete mowing of lot 13 owned by Fire District</i>	ongoing	CVFD	High
<i>Cooperate with private landowners to maintain and expand shaded fuel breaks and “brush outs” along existing roadways, fence lines, and natural and existing fuel breaks</i>	Ongoing	TCV, CVFD, private landowners	High
<i>Plan for volunteer maintenance of green belt treatment areas on private and town-owned land; (See Appendices D, J)</i>	Ongoing	Private landowners, TCV, CVFD	High
<i>Provide semi-annual chipper events for private landowners within Castle Valley</i>	Semi-Annual	FFSL, private landowners, CVFD	High
<i>Implement a weed mitigation/control program</i>	Ongoing	TCV, CVFD, BLM, Grand County	High
<i>Provide roadside mowing of weeds</i>	Ongoing	TCV	High
<i>Notes, updates ,and monitoring</i>			

Castle Valley Fire District Wildfire Preparedness Plan 2019

Goal C.2 – Work with local, state and federal fire officials to decrease fuels on private and adjacent public lands to reduce wildfire intensity and impact in and around the community.			
Action(s):	Timeline:	Community Lead:	Priority:
<i>BLM Fuel reduction project in Round Mountain Area</i>	Fall 2019	BLM	High
<i>BLM Mowing of Town/BLM Boundaries</i>	Spring 2019	BLM/TCV	High
<i>Notes, updates ,and monitoring</i>			

GOAL D: MAINTENANCE – the process of preserving actions that have occurred including fuel treatments and reduction.

Goal D.1 - Regularly evaluate, update and maintain project commitments.			
Action(s):	Timeline:	Community Lead:	Priority:
<i>Review all mitigation projects and reassess</i>	Annually	Fire Commission	High
<i>Maintain work in greenbelt</i>	Annually	Volunteers	High
<i>Notes and updates</i>			

Castle Valley Fire District Wildfire Preparedness Plan 2019

PART IV: CONTACTS

The contacts in this part identify community resources that can be used to complete the goals of the plan.

Planning Committee Member List			
Name	Affiliation	Phone Number	E-mail
Bob Lippman	CVFD, Former Commissioner, CV Resident	435-259-1182	bob.Lippman@nau.edu
Ron Mengel	CVFD, Former Commissioner, CV Resident	435-259-6726	rmengel@frontiernet.net
Ron Drake	Castle Valley Fire Chief and homeowner, media representative (Times Independent)	435-259-8588	rimshadow35@gmail.com
Bob Russell	Castle Valley Fire Commissioner, firefighter, CERT Team and CV Resident	435-259-4561	bobrussell@castlevalleyfire.org
Leta Vaughn	Castle Valley Fire Commissioner, firefighter, and CV Resident	435-259-2364	letavaughn@castlevalleyfire.org
Mitch Stock	Castle Valley Fire Commissioner, firefighter, and CV Resident	435-259-8508	mitchstock@castlevalleyfire.org
Jason Kirks	BLM	435-259-2184	jkirks@blm.gov
Jason Johnson	FFSL	435-259-3762	jasonajohnson@utah.gov
Bruce Jenkins	Grand County Fire Warden	435-220-0179	bjenkins@utah.gov
Ben Huntsman	FFSL	801-538-5413	benhuntsman@utah.gov
Rick Bailey	Grand County Emergency Manager	435-259-8115	rbailey@grandcountysheriff.org
Steve White	Grand County Sheriff	435-259-8115	swhite@grandcountysheriff.org
Jazmine Duncan	Mayor of Castle Valley	435-259-9828	jazmined@castlevalleyutah.com
Greg Halliday	Grand County Council	435-259-4606	council@grandcountyutah.net

Castle Valley Fire District Wildfire Preparedness Plan 2019

Tim Higgs	Grand County Weed Supervisor	435-259-1369	twhiggs@grandcountyutah.net
Wendy Fisher	Executive Director, Utah Open Lands	801-463-6156	wendy@utahopenlands.org
Tamsin McCormick	Plateau Restoration	435-259-7733	tamsin@frontiernet.net

Commercial Entities				
Organization	Contact Person	Phone Number	E-mail	Address
Red Cliffs Lodge	Colin Fryer	435-259-2002 435-259-7077	info@redcliffslodge.com	Mile 14, Hwy. 128
Sorrel River Ranch	Dave Ciani	435-259-4642	stay@sorrelriver.com	HC64 Box 4002 Mile 17, Hwy. 128
Castle Valley Inn	Jason & Janette Graham	435-259-6012	info@castlevallyinn.com	HC64 Box 2602 425 Amber Ln.
Mayberry Preserve	Kara Dowerend	435-259-6670	info@reveg.org	Mile 15, Hwy. 128

Castle Valley Fire District Wildfire Preparedness Plan 2019

Formal Associations			
Organization	Contact Person	Phone Number	E-mail
Castle Valley Volunteer Fire Department	Ron Drake (Chief)	435-259-8588	rimshadow35@gmail.com
Day Star Academy/Seventh Day Adventist Community Farm	Randy Ward	435-259-7719	daystar_academy@frontiernet.net
Castle Valley Water Company (Greenbelt)	Ken Drogin	435-259-4838	
LDS Church	Ron Drake	435-259-8588	rimshadow35@gmail.com
Grand County Library/CV Branch	Jenny Haraden	435-259-9998	jenny@moablibrary.org

Media Support			
Organization	Contact Person	Phone Number	E-mail
Moab TI	Zane Taylor	435-259-7525	zane@moabtimes.com
Moab Sun News	Heila Ershadi	435-259-6261	publisher@moabsumnews.com
KZMU Radio	Sarah Mead	435-259-8824	program-director@kzmu.org
KCYN Radio	General Office	435-259-1035	kcyn@kcynfm.com

Castle Valley Fire District Wildfire Preparedness Plan 2019

Schools				
School	Contact Person	Phone Number	E-mail	Address
Daystar Academy	Randy Ward	435-259-7719	daystar_academy@frontiernet.net	Castleton Rd. (La Sal Mt. Loop Rd)

Transportation			
Organization	Contact Person	Phone Number	E-mail
Town of CV Road Dept.	Mingo Gritts	435-260-0871	mingog@castlevalleyutah.com
Grand County Road Dept.	Bill Jackson	435-259-5308	bjackson@grandcountyutah.net
UDOT	Chet Johnson	801-965-4000	cejohnson@utah.gov

Private Equipment Capabilities				
Type of Equipment	Contact Person	Phone Number	E-mail	Address
<i>See Appendix A</i>				

Castle Valley Fire District Wildfire Preparedness Plan 2019

Other			
Organization	Name	Phone Number	E-mail

APPENDIX

Appendix A:

Contents:	Private Equipment List For Emergency Use	

Appendix B:

Contents:	Municipal and County Ordinances	

Appendix C:

Contents:	Maps	

Castle Valley Fire District Wildfire Preparedness Plan 2019

Appendix D:

Contents:	Firewise Project Data	

Appendix E:

Contents:	Emergency Water Access Plan	

Appendix F:

Contents:	Sole Source Aquifer Protection & Protocol	

Appendix G:

Contents:	Fire History	

Appendix H:

Contents:	UWRAP Report on Fire District Risk Eval.	

Castle Valley Fire District Wildfire Preparedness Plan 2019

Appendix I:		
Contents:	Wildfire Hazard Lot Assessments that have been completed	

Appendix J:		
Contents:	Fuel Modification Projects	

Appendix K:		
Contents:	Pre-Attack Plan	Not Finished

Appendix L:		
Contents:	Grand County Wildland Mobilization Plan	Needs updating

Appendix M:		
Contents:	Firewise “10 steps” List	

Appendix N:		
Contents:	Emergency Personnel Roster	

Castle Valley Fire District Wildfire Preparedness Plan 2019

--	--

Appendix O:

Contents:	Fire District Evacuation Plans	Areas Beyond Castle Valley need to be added

Appendix P:

Contents:	Monthly In-kind Tracking Forms	

Appendix Q:

Contents:	Miscellaneous Firewise and Other Forms	

Appendix R:

Contents:	Firewise USA Membership	

Appendix S:

Contents:	Miscellaneous Watershed Studies & Reports	

Castle Valley Fire District Wildfire Preparedness Plan 2019

--	--

Appendix T:

Contents:

Utah Wildland-Urban Interface Code	

Appendix U:

Contents:

Emergency Downed Powerline Procedures & PCB Spill Clean Up Procedures	

Appendix V:

Contents:

Cooperative Agreement Between The Utah Division of Forestry, Fire and State Lands and Grand County Service Area for Castle Valley Fire Protection	